



**MS-PDU**  
**User Manual**

## Contents

<b>1. MS-PDU Summary</b>	
<b>2. Main functions</b>	
<b>2.1 Monitor</b>	
<b>2.2 Control</b>	
<b>2.3 Keep the former state of outlets after reset</b>	<b>FOUT! BLADWIJZER NIET GEDEFINIEERD.</b>
<b>2.4 Self-defined alarm</b>	<b>FOUT! BLADWIJZER NIET GEDEFINIEERD.</b>
<b>2.5 System default alarm</b>	<b>FOUT! BLADWIJZER NIET GEDEFINIEERD.</b>
<b>2.6 Alarm methods</b>	<b>FOUT! BLADWIJZER NIET GEDEFINIEERD.</b>
<b>2.7 User management</b>	<b>FOUT! BLADWIJZER NIET GEDEFINIEERD.</b>
<b>2.8 Access method</b>	<b>FOUT! BLADWIJZER NIET GEDEFINIEERD.</b>
<b>3. Application</b>	<b>FOUT! BLADWIJZER NIET GEDEFINIEERD.</b>
<b>4. Product structure diagram</b>	
<b>5. Mounting method</b>	
<b>6. Software instruction:</b>	
<b>6.1 Software summary</b>	
<b>6.2 Access methods</b>	
<b>6.2.1 Web access</b>	
<b>6.2.2 SNMP Access</b>	
<b>6.2.3 Serial access</b>	<b>FOUT!</b>
<b>BLADWIJZER NIET GEDEFINIEERD.</b>	
<b>7. Technical parameters.</b>	<b>FOUT!</b>
<b>BLADWIJZER NIET GEDEFINIEERD.</b>	

## **MS-PDU User Manual**

### **1. MS-PDU Summary:**

### **2. Main functions**

:

### **3. Application**

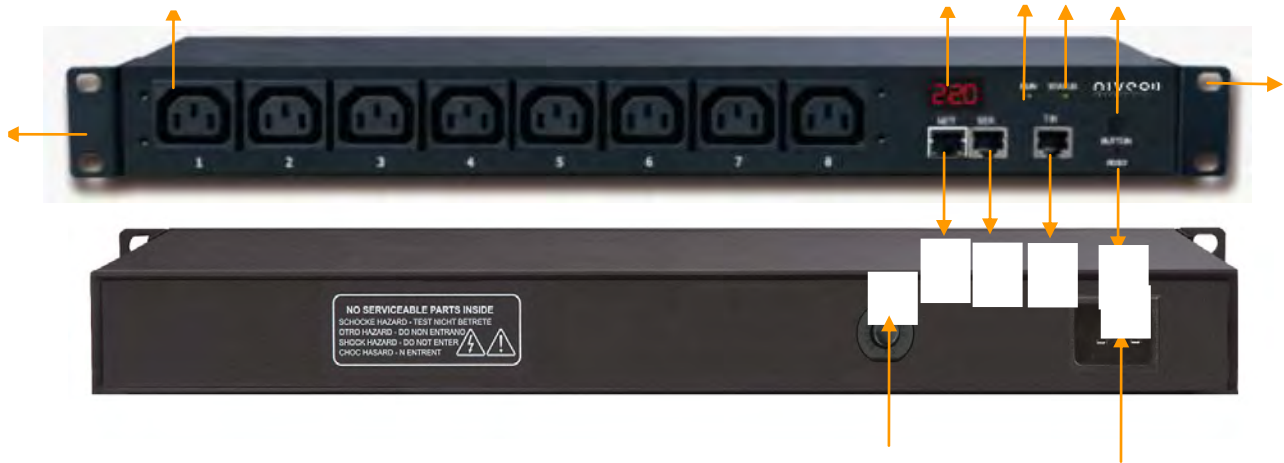
## 4. Product structure diagram

### MS-PDU 1: Vertical Series





### MS-PDU 2: Horizontal Series



**5. Mounting method**

**6. Software instruction**

**How to access the Web?**

**niveo**

**niveo**

The screenshot shows the Niveo MS-PDU web interface. The browser address bar displays '192.168.1.163/home.html'. The page title is 'MS-PDU' and the version is 'Version: 1.32'. The interface is divided into several sections:

- Device Manager:** Contains links for 'Device State', 'Threshold Settings', and 'Device Settings'.
- Service Settings:** Contains links for 'User Settings', 'Network', 'SNMP', 'E-mail Alarm Settings', and 'Restart'.
- Output Table:** A table with 8 rows and 5 columns: Item, Output Name, Output State, Output Current (A), and Output Control. All outputs are currently 'ON'.
- Input Voltage (V):** 202
- Input Current (A):** 0
- All Outputs Control:** Includes 'On' and 'Off' buttons.
- Sensors:** A table with 4 columns: Temperature, State (%), Humidity, and State (°C). The values are: Temperature Sensor1, --, Humidity Sensor1, --.

Item	Output Name	Output State	Output Current (A)	Output Control
1	Output1	ON	--	<input type="button" value="On"/> <input type="button" value="Off"/>
2	Output2	ON	--	<input type="button" value="On"/> <input type="button" value="Off"/>
3	Output3	ON	--	<input type="button" value="On"/> <input type="button" value="Off"/>
4	Output4	ON	--	<input type="button" value="On"/> <input type="button" value="Off"/>
5	Output5	ON	--	<input type="button" value="On"/> <input type="button" value="Off"/>
6	Output6	ON	--	<input type="button" value="On"/> <input type="button" value="Off"/>
7	Output7	ON	--	<input type="button" value="On"/> <input type="button" value="Off"/>
8	Output8	ON	--	<input type="button" value="On"/> <input type="button" value="Off"/>

Input Voltage (V)	Input Current (A)	All Outputs Control
202	0	<input type="button" value="On"/> <input type="button" value="Off"/>

Temperature	State (%)	Humidity	State (°C)
Temperature Sensor1	--	Humidity Sensor1	--

,

**Device Manager**

- Device State
- Threshold Settings
- Device Settings

MS-PDU Version 1.32

192.168.1.163/home.html

**Device Manager**

- Device State
- Threshold Settings
- Device Settings

**Service Settings**

- User Settings
- Network
- SNMP
- E-mail Alarm Settings
- Restart

Item	Output Name	State (A)	Min (A)	Max (A)	Save
1	Output1	0	--	--	Save
2	Output2	0	--	--	Save
3	Output3	0	--	--	Save
4	Output4	0	--	--	Save
5	Output5	0	--	--	Save
6	Output6	0	--	--	Save
7	Output7	0	--	--	Save
8	Output8	0	--	--	Save

Name	State	Min (A)	Max (A)	Save
Input	0	0	25.5	Save

Item	Output Name	State	Min	Max	Save
1	Temperature Sensor1	0	0	99	Save

MS-PDU Version 1.32

192.168.1.163/home.html

**Device Manager**

- Device State
- Threshold Settings
- Device Settings

**Service Settings**

- User Settings
- Network
- SNMP
- E-mail Alarm Settings
- Restart

**Device Settings**

Device Name:

Output power on delay:  s

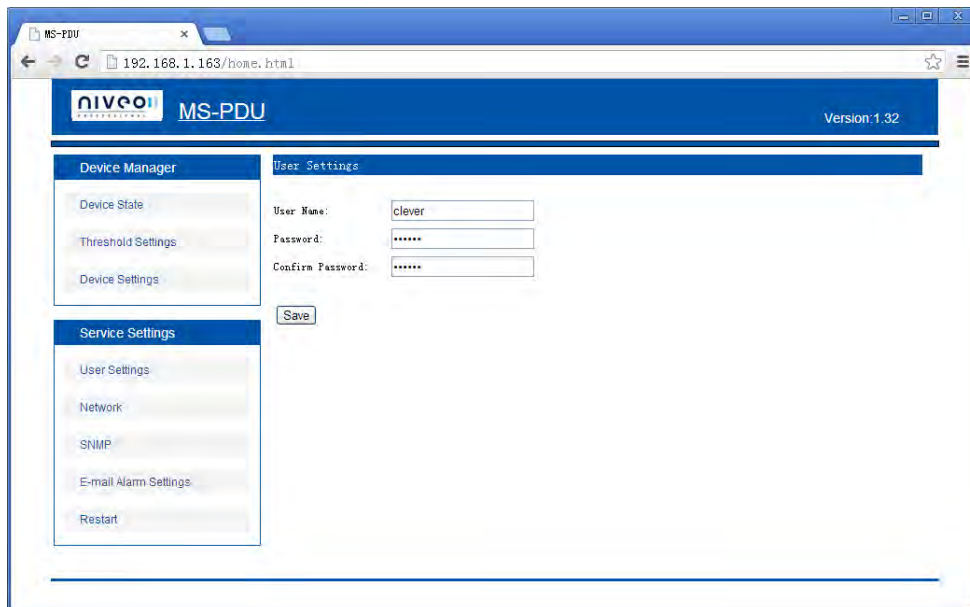
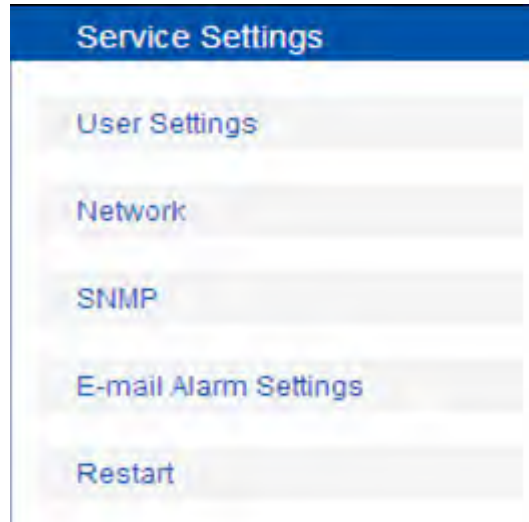
Output power off delay:  s

Web server port:

Save



:



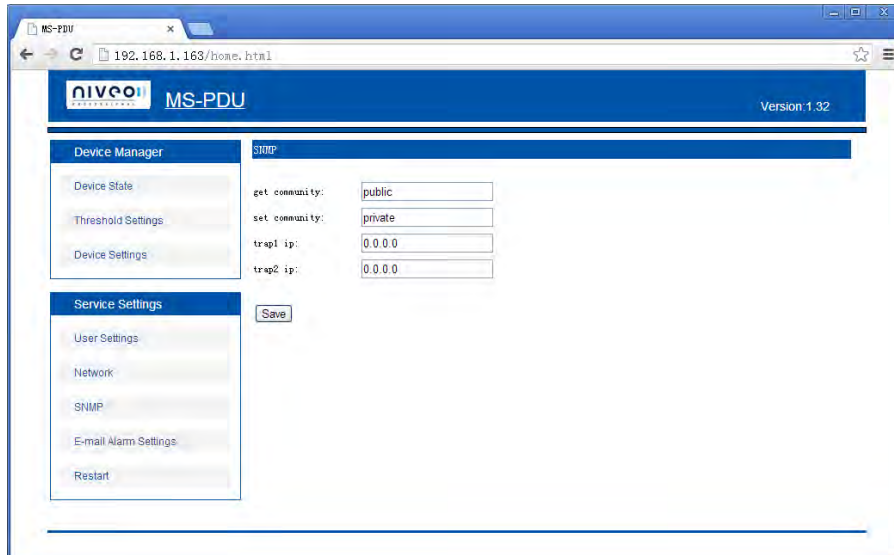
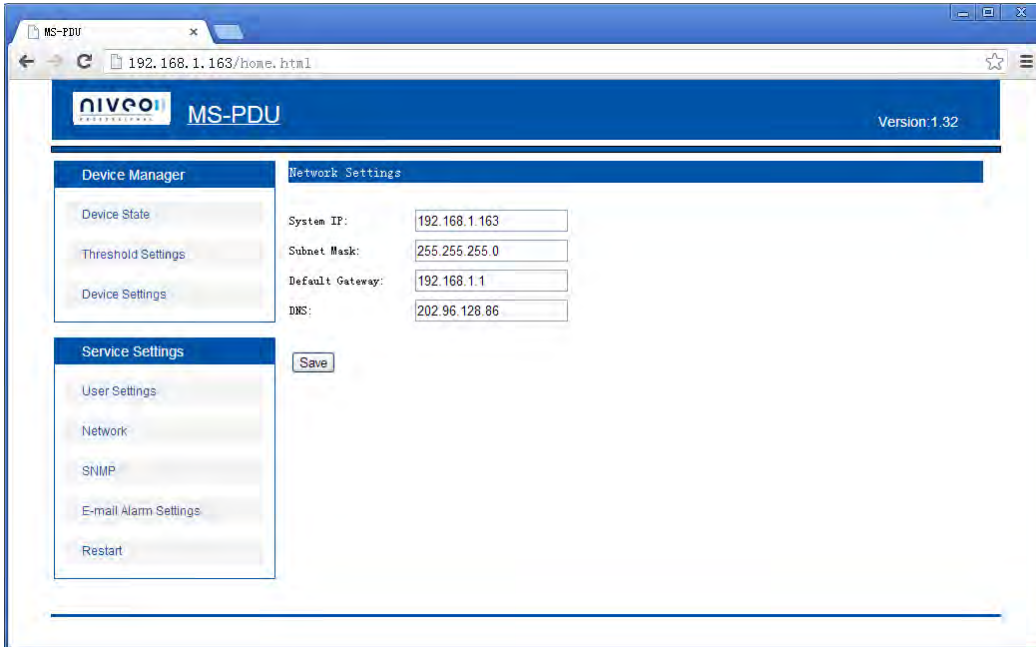
:

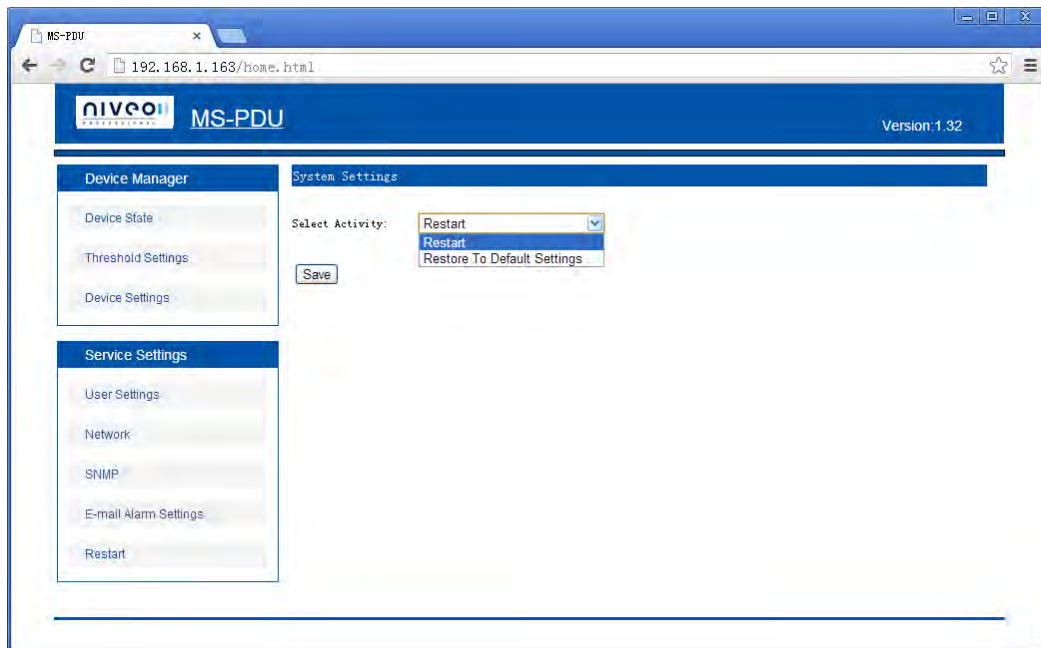
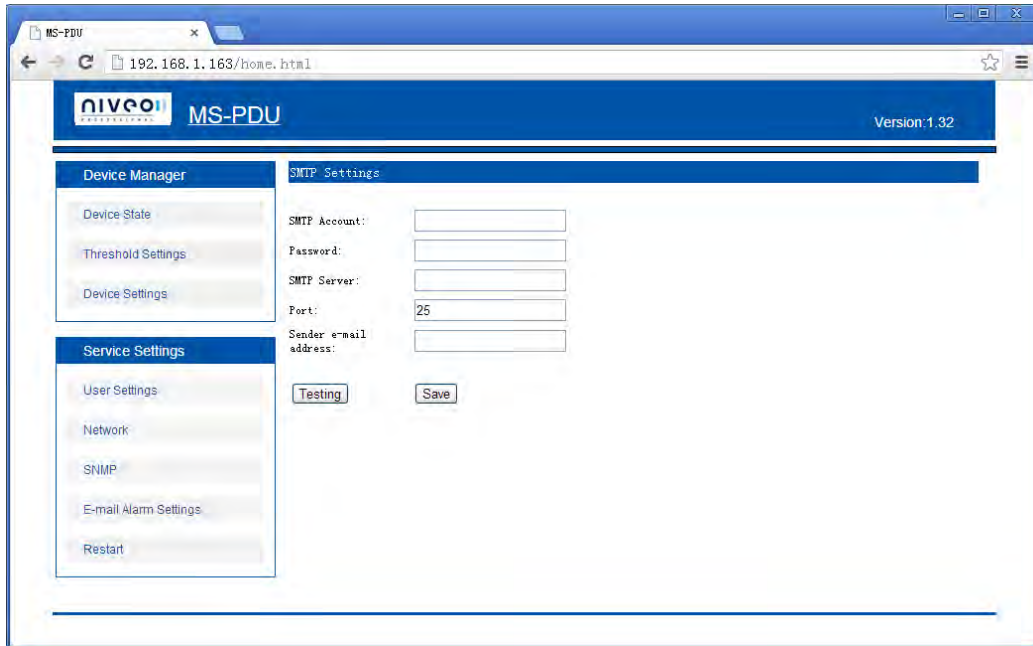
( )

:

:

:










:

**7. Technical parameters**

			:
			:

			: : % : :
			: : % : :
			: °C °C, : °C :
			: % :
			°C ~ °C
			~
			°C °C